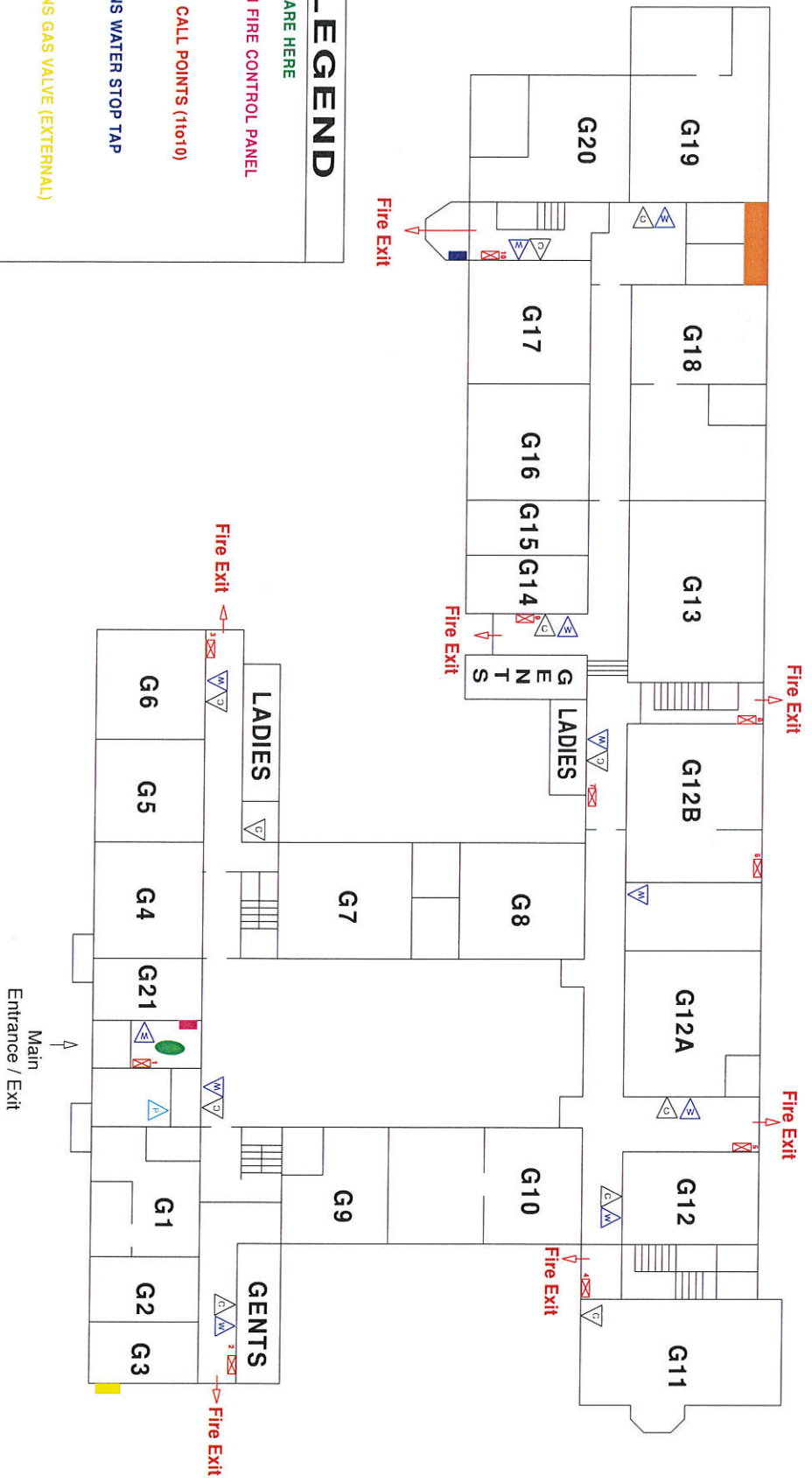


**\*** KEY FOR ACCESS TO THE EXTERNAL GAS VALVE IS MARKED No 27 AND IS LOCATED IN THE KEY SAFE AT RECEPTION  
 \*T\* KEY FOR ACCESS TO THE MAIN ELECTRICAL CUPBOARD IS MARKED 'ELECTRIC CUPBOARD' AND IS LOCATED IN THE KEY SAFE AT RECEPTION

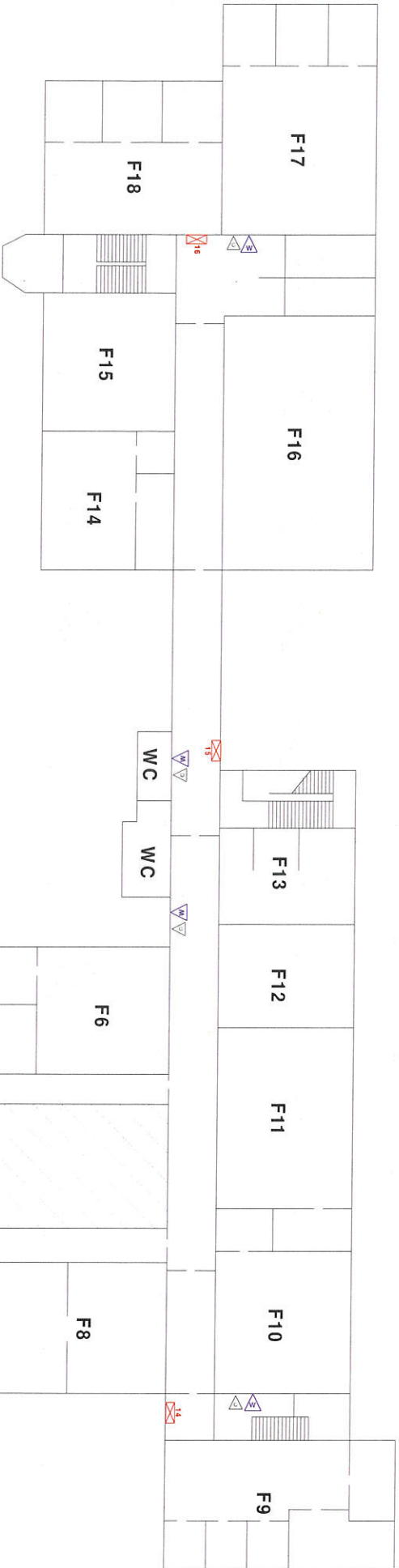


### LEGEND

- YOU ARE HERE
- MAIN FIRE CONTROL PANEL
- 1-10 FIRE CALL POINTS (1to10)
- MAINS WATER STOP TAP
- MAINS GAS VALVE (EXTERNAL)
- ELECTRICAL MAINS CUPBOARD
- △ 2kg CARBON DIOXIDE FIRE EXTINGUISHER
- △ 9L WATER FIRE EXTINGUISHER
- △ 4kg DRY POWDER FIRE EXTINGUISHER

# GROUND FLOOR

TITLE	MEXBOROUGH BUSINESS CENTRE
FOR	N&S GROUP (P. NEWMAN)
PREPARED BY	1st ELECTRICAL TESTING
DATE	2/5/18
DRAWN BY	S A BALL



# LEGEND

11-16

 FIRE CALL POINTS (111016)

 2kg CARBON DIOXIDE FIRE EXTINGUISHER

 9L WATER FIRE EXTINGUISHER

# FIRST FLOOR



TITLE	MEXBOROUGH BUSINESS CENTRE
FOR	N&S GROUP (P. NEWMAN)
PREPARED BY	1st ELECTRICAL TESTING
DATE	2/5/18
DRAWN BY	S A BALL